

Western Australian creative industries: COVID-19 impacts

Performing arts companies

Respondent profile

58

performing arts companies shared their experiences on how COVID-19 has impacted their work.

Respondent type

29%
Sole traders

28%
Companies

28%
Not-for-profits

16%
Other

Industry sub-category (top responses)

31%
Theatrical

19%
Dance and ballet

12%
Circus

7%
Musical production

The following findings are based on respondents' reported impacts from 1 April to 30 June 2020.

Number of jobs



Jobs in performing arts companies fell 60%. This was based on expected versus actual number of employees reported by partnerships, companies and not-for-profits operating in the performing arts companies sector. **There were significant decreases in freelance and contract jobs (down 88%) and casual jobs (down 76%).**

Actual versus expected revenue



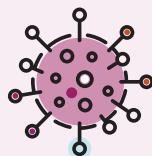
% of expected revenue earned
BEFORE COVID-19 support

63%

% of expected revenue earned
AFTER COVID-19 support

84%

COVID-19 support



Received COVID-19 support

76%

Average value of support

\$42,305

JobKeeper - % of business entities that received JobKeeper assistance for employees



Freelancer

N/A

Sole trader

36%

Partnership

100%*

Company

75%

Not-for-profit

75%

Alternative revenue sources

% of business entities that needed to draw on alternative revenue sources to cover lost revenue

Revenue Sources	Freelancer	Sole trader	Partnership	Company	Not-for-profit
Multiple responses allowed (sum may be greater than 100%)	100%*	84%	100%*	100%	17%
Business reserves	-	-	33%	58%	17%
Personal savings	100%	74%	67%	42%	0%
Superannuation	0%	6%	33%	17%	0%
Credit cards	0%	16%	33%	8%	0%
Family and friends	0%	10%	33%	17%	0%
Bank loan	0%	0%	33%	8%	0%
Other	0%	13%	0%	17%	0%
Did not need	0%	16%	0%	0%	83%

Methodology — This fact sheet was compiled from a survey conducted in 2020 by CATALYSE® Pty Ltd on behalf of the Department of Local Government, Sport and Cultural Industries. To view the full survey report visit the Research Hub on the DLGSC website.

* Small sample size (<5 respondents)